



GLUCOSE PROFILE

- Fasting Blood Sugar + Urine Sugar
- Post Prandial Blood Sugar + Urine Sugar
- GLYCOSYLATED HAEMOGLOBIN (HbA1c)

40
40
400



DSDSC KIDNEY CARE

- Serum Creatinine
 - Blood Urea
- MICROALBUMIN
 - Uric Acid

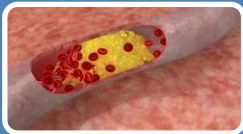
100
100
100
150



LIVER PROFILE

- Total Bilirubin
- Total Protein
 - Albumin
- S.Glutamic Oxaloacetic Transaminase
- S.Glutamic Pyruvate Transaminase
 - Alkaline Phosphatase

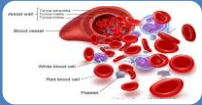
400



LIPID PROFILE

- Total Cholesterol
 - Triglycerides
- HDL (Good) Cholesterol
- L D L (Bad) Cholesterol
 - V L D L Cholesterol
- TC/HDL Ratio, LDL / HDL Ratio

350



HAEMOGRAM (3PART)

- Total Leucocytes, Neutrophils, Lymphocytes, Mid Population
 - Total RBC, HEMOGLOBIN, Hematocrit
- MCV, MCH, MCHC, RDW-CV, PLATELET, PDW, MPV

150



COMPLETE URINE EXAMINATION [CUE]

- Protein, Sugar
- Pus Cells, R.B.C, Epithelial Cells
- Bacteria, Casts, Crystals

50



DSDSC HEART CARE

- 12 Channel 12 Lead ECG

100



DSDSC EYE CARE

- Pre Screening of Diabetic RETINOPATHY, CATARACTS and GLAUCOMA

400



DSDSC FOOT CARE

- Foot Doppler Studies
- Biothesiometry

400



SPECIALIST CONSULTATION

- DIABETOLOGIST CONSULTATION

120

TOTAL

2900

2100